



The EHSF would like to remind EMS agencies the Department of Health is the lead regarding information about the Coronavirus. The EHSF will continue to disseminate information provided by the Bureau of EMS for EMS agencies as quickly as possible. Information and guidance are changing rapidly.

Regional Status

As of the time this document was written (Friday, 04/03/2020 at 1500 hours), there are 8,420 confirmed cases of COVID-19 throughout Pennsylvania and 102 reported deaths. Please know the number of cases can change frequently.

County	Confirmed Cases	Deaths
Adams	19	0
Cumberland	45	2
Dauphin	79	1
Franklin	26	0
Lancaster	232	5
Lebanon	54	0
Perry	4	1
York	121	1
EHSF Total	327	10
Pennsylvania Total	8,420	102

You can monitor the coronavirus in Pennsylvania at this link:

<https://www.health.pa.gov/topics/disease/Pages/Coronavirus.aspx>

Updates from the Governor's Office/Department of Health:

Continue practicing social distancing.

Non-essential businesses and public schools will remain closed indefinitely.

A stay at home order is in effect for all counties in Pennsylvania.

Updates from the Bureau of EMS

Here is the link to a listing of EMS Information Bulletins (EMSIBs): <https://www.ehsf.org/ems-information-bulletins/>.

- **Previous EMSIBs**

- EMSIB 2020-01 Novel coronavirus 2019-nCoV
- EMSIB 2020-02 Infection Control
- EMSIB 2020-06 Protocol and Policy Updates Related to COVID-19
- EMSIB 2020-07 Alternate Pathway for Psychomotor Testing
- EMSIB 2020-08 Issued Extension to EMS Certification Expiration Dates
- EMSIB 2020-09 Out of State Licensed EMS Agencies
- EMSIB 2020-10 EMS Providers Obtaining Nasopharyngeal Swabs



- **New EMSIBs**

- EMSIB 2020-11 Level I EMS Staffing Exceptions
- EMSIB 2020-12 PCR Data Collection for Exemptions Outlined in EMSIB 2020-11
- EMSIB 2020-13 Alternatives to Nebulized Bronchodilators During COVID-2019

2020-11 Level I EMS Staffing Exceptions

The Bureau of EMS will permit exceptions to minimum staffing while the proclamation of disaster emergency remains in effect. This disaster proclamation was issued on 06 March 2020. Please consider once the epidemic is over, the staffing requirements defined in the EMS Act and Rules and Regulations will be required again.

The staffing exceptions permitted include:

- A driver without having to have EMSVO
- BLS Ambulance: 1 EMT and a driver
- IALS Ambulance: 1 AEMT and a driver
- ALS Ambulance: 1 Paramedic and an EMR

If an EMS agency needs to use these staffing exceptions, they must notify their EMS agency medical director and their regional council within 24 hours of the first utilization.

The EHSF requests you submit notification using the electronic webform, which can be found at: <https://www.ehsf.org/form/staffing-exceptions-for-licensed>. The form can also be found at the sitewide alert at the top of the EHSF website and on the EHSF coronavirus webpage.

Attached you will find a FAQ document to assist with questions.

Additional questions can be directed to Matthew Kratz at mkratz@ehsf.org or 717-316-0743.

2020-12 PCR Data Collection for Exemptions Outlined in EMSIB

The Bureau of EMS provided clarification to documenting PCRs if using the staffing exemptions in EMSIB 2020-11. If the EMS agency uses drivers without a Pennsylvania EMS certification number, they should enter the certification number in the ePCR system as COVID19. The PCR narrative should state, "Driver identified as COVID19 in crew roster is (insert First Name and Last Name." Additionally, EMS agencies should maintain documentation of the driver's valid driver's license.

2020-13 Alternatives to Nebulized Bronchodilators During COVID-2019

The Bureau of EMS released EMSIB 2020-13 Alternatives to Nebulized Bronchodilators during COVID-19. The EMSIB is attached. The changes in treatment to reduce the risk of aerosol-generating procedures are only permitted during the COVID-19 epidemic.



The following substitutions are permitted:

- **Albuterol MDI with Spacer**
 - o BLS Protocol 931 permits the substitution of albuterol by MDI with spacer
 - o Impacted Protocols: BLS 422, AEMT 4022i, ALS 4022, BLS 931
 - o Permitted by EMTs trained to use nebulized albuterol treatment on BLS agencies, AEMTs, and providers certified above the AEMT level
- **Intramuscular Epinephrine**
 - o With approval of the EMS agency medical director, providers at or above the AEMT level may substitute IM epinephrine before contacting medical command using adult and pediatric doses in the impacted protocols listed below.
 - o Impacted Protocols: AEMT 4022i and ALS 4022
 - o Permitted by providers certified at or above the AEMT level
- **Intramuscular Terbutaline**
 - o With approval of the EMS agency medical director, providers above the AEMT level may administered this medication. However, this medication must be ordered by a medical command physician.
 - o Impacted Protocol: ALS 4022 (Please note, terbutaline is not listed in the PA EMS Protocols. However, medical command may order this medication)
 - o Permitted by providers certified above the AEMT level

Regional EMS Agency Conference Call

The EHSF encourages county EMS councils and hospitals to continue coordinating communications with EMS agencies throughout their respective counties. To increase the reach of our communication, the EHSF will host weekly conference calls to provide updates and answer questions. The calls will separate counties into groups to include representation from the County EMA, County PSAP, and hospitals. Conference calls are anticipated to last 30 minutes.

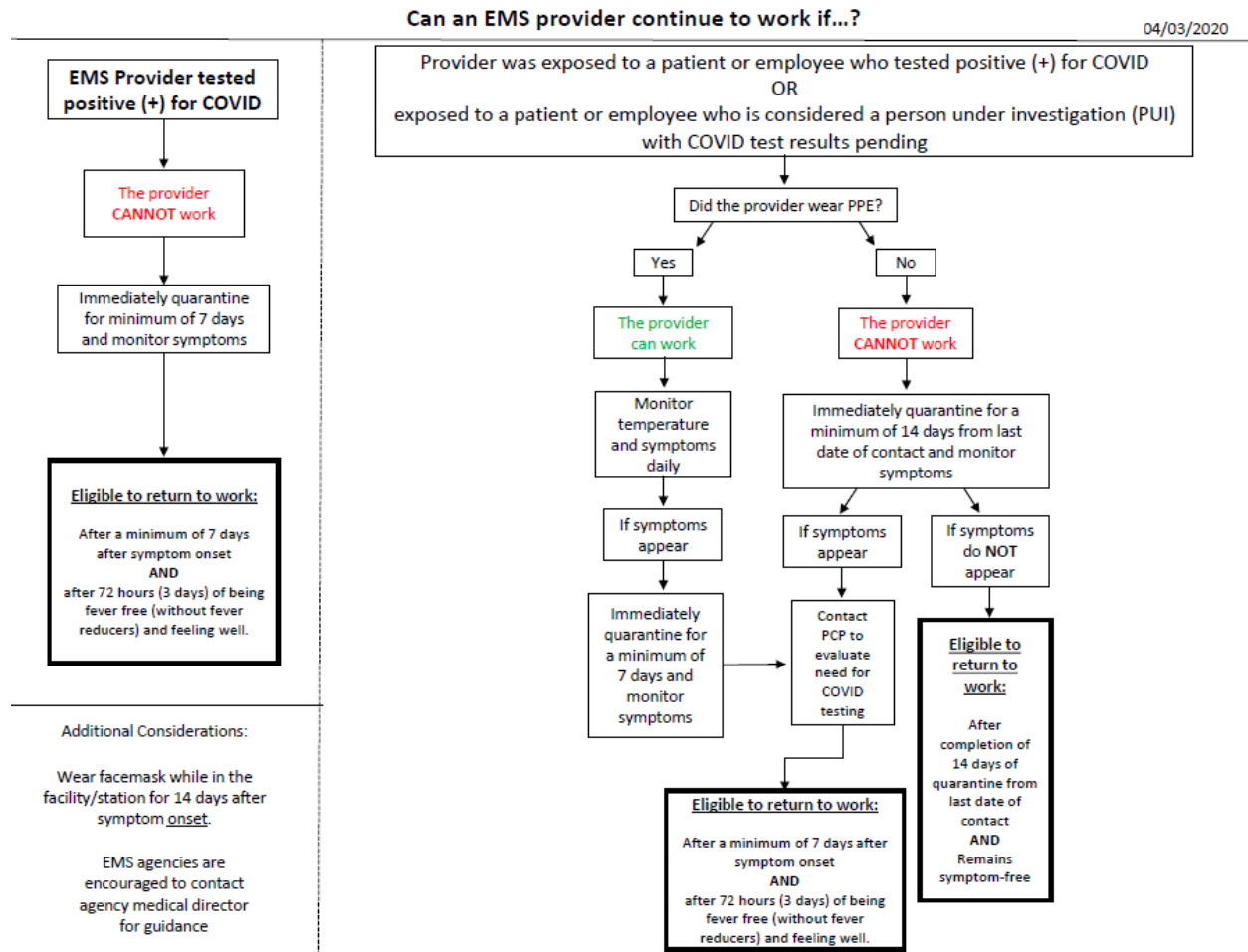
County	Weekday	Time	Call In Information
Adams	Thursday	1400	571-317-3122 Access Code: 888-434-445
Cumberland	Wednesday	1400	571-317-3122 Access Code: 888-434-445
Dauphin	Wednesday	0900	571-317-3122 Access Code: 888-434-445
Franklin	Thursday	1400	571-317-3122 Access Code: 888-434-445
Lancaster	Friday	1000	Provided through Lancaster County EMS Council
Lebanon	Wednesday	0900	571-317-3122 Access Code: 888-434-445
Perry	Wednesday	1400	571-317-3122 Access Code: 888-434-445
York	Thursday	0900	571-317-3122 Access Code: 888-434-445

If you are unable to attend your specific counties call, you are welcome to join another county's call. However, local information provided by the EMA, PSAP, and hospitals may be missed.



Provider Eligibility to Work Guidance

The EHSF has updated guidance for EMS agencies to consider when developing their own policies regarding when a provider can work versus should be quarantined. Please refer to the updated flowchart.



Stroke Patients: Point of Contact

We have an important message for EMS providers to consider from our partners with the Stroke Coordinators of Pennsylvania.

If EMS encounters a patient with stroke symptoms, please bring contact information for the best point of contact to the hospital. In the event the stroke patient becomes aphasic and a visitor is not preset during the restricted visitor policy, the hospital staff will need to know the best point of contact for the event.



EHSF Activities to Date

- Conference Calls:
 - o Medical Command Facility Directors
 - o County Council Presidents
 - o SCTF
 - o EMS County Council Meetings
 - o Regional 9-1-1 Centers (PSAPs)
 - o Dr. Alvin Wang Regional Medical Director, Montgomery County EMS Council
- Finalized Regional COOP Plan Revisions
 - o Prepares the region to request exceptions and make provisions if workforce or resources reach critical levels
 - o Sharing plan with necessary stakeholders
 - o Developing documents to request exceptions if needed
- Generated Best Practice Documents for the following:
 - o EMS Operations and General Information
 - o QRS Response Guidance
 - o Fire Services on EMS Incidents
 - o Screening Providers
 - o No Work / Return to Work Eligibility
- Monitor staffing levels of EMS agencies and PSAPs
- Sent treatment consideration for ALS Protocol change to Bureau of EMS
 - o Currently under consideration
- Developed tool to assist with no transport/treat at home with self-care for influenza-like illness patients
- Developed reporting tool for minimum staffing exceptions

Communication Pathway

We encourage EMS agency leadership to communicate with the respective County Council President. We will be sharing information to them to share with the EMS agencies. We will also be communicating with them frequently to evaluate the status and needs of each county.

County	County Council President
Adams	Eric Zaney
Cumberland	Duane Nieves
Dauphin	Jason Campbell
Franklin	Doug Bitner
Lancaster	Darrell Fisher
Lebanon	Steve Mrozowski
Perry	Wes Smith
York	Mark Moody



**EMERGENCY HEALTH
SERVICES FEDERATION**
YOUR COMMUNITY. OUR COMMITMENT.

Helpful Information:

You can learn more about the coronavirus on the CDC's website at:

<https://www.cdc.gov/coronavirus/2019-ncov/index.html>

You can reference documents shared by the EHSF at:

<https://www.ehsf.org/index.php/resource/coronavirus-update>