



The EHSF would like to remind EMS agencies the Department of Health is the lead regarding information about the Coronavirus. The EHSF will continue to disseminate information provided by the Bureau of EMS for EMS agencies as quickly as possible. Information and guidance are changing rapidly.

Regional Status

As of the time this document was written (Thursday, 04/09/2020 at 2030 hours), there are 18,228 confirmed cases of COVID-19 throughout Pennsylvania and 338 reported deaths. Please know the number of cases can change frequently.

County	Confirmed Cases	Deaths
Adams	38	1
Cumberland	88	2
Dauphin	180	2
Franklin	52	0
Lancaster	596	17
Lebanon	187	0
Perry	15	1
York	250	3
EHSF Total	1,406	26
Pennsylvania Total	18,228	338

You can monitor the coronavirus in Pennsylvania at this link:

<https://www.health.pa.gov/topics/disease/Pages/Coronavirus.aspx>

Updates from the Governor's Office/Department of Health:

The Governor signed Act 13 ordering public schools to remain closed throughout the remaining 2019-20 school year.

The Governor is mandating medical facilities and healthcare suppliers to report PPE and other medical resources in a new tracking database.

Continue practicing social distancing.

Non-essential businesses will remain closed indefinitely.

A stay at home order is in effect for all counties in Pennsylvania.

General public is requested to wear a mask when leaving their homes.

Updates from the Bureau of EMS

Here is the link to a listing of EMS Information Bulletins (EMSIBs): <https://www.ehsf.org/ems-information-bulletins/>.



- **Previous EMSIBs**

- EMSIB 2020-01 Novel coronavirus 2019-nCoV
- EMSIB 2020-02 Infection Control
- EMSIB 2020-06 Protocol and Policy Updates Related to COVID-19
- EMSIB 2020-07 Alternate Pathway for Psychomotor Testing
- EMSIB 2020-08 Issued Extension to EMS Certification Expiration Dates
- EMSIB 2020-09 Out of State Licensed EMS Agencies
- EMSIB 2020-10 EMS Providers Obtaining Nasopharyngeal Swabs
- EMSIB 2020-11 Level I EMS Staffing Exceptions
- EMSIB 2020-12 PCR Data Collection for Exemptions Outlined in EMSIB 2020-11
- EMSIB 2020-13 Alternatives to Nebulized Bronchodilators During COVID-2019
- EMSIB 2020-14 COVID-19 Lapse of Registration Regulatory Exception
- EMSIB 2020-15 Signatures on Transfer of Care Forms

- **New EMSIBs**

- EMSIB 2020-16 PPE Reminders
- EMSIB 2020-17 Temporary Statewide BLS Non-Transport of Patients with Suspected COVID-19

EMSIB 2020-16 PPE Reminders

The Bureau of EMS released guidance for EMS regarding PPE.

- Suggestion for EMS providers to wear a simple, medical mask at all times when on duty, including when at the station, in the vehicle with a partner, and when on all calls regardless the risk of a patient with COVID-19
- Hand hygiene reminder
- PPE for a patient at risk for COVID-19 is full PPE, including N95 mask or equivalent
- Source control for masking patients with simple, medical masks
- DONNING PPE guidance from King County, Washington
- DOFFING PPE guidance from King County, Washington
- Training video links included

EMSIB 2020-17 Temporary Statewide BLS Non-Transport of Patients with Suspected COVID-19

The Bureau of EMS released a new, temporary Statewide EMS Protocol. This will look very similar to the EMS Triage Tool for COVID-19, we have been using in our region for the past two weeks. However, there are some changes.

The following documents were sent Thursday evening:

- EMSIB 2020-17 regarding release of the new protocol
- Protocol 932
- Protocol 932 Home Care Instructions provided by the Bureau of EMS
- EHSF Home Care Instructions
 - The content is identical to the BEMS version except the bottom of the second page includes the hotline numbers for the healthcare systems in our eight-county region.



Temporary Statewide BLS Non-transport of Patients with Suspected COVID-19 Protocol #932 permits non-transport and home care for patients **who meet certain criteria without the need to contact medical command for permission.** There is a checklist provided with the protocol for guiding the EMS provider to determine if the individual does not have high-risks and can remain at home without contacting medical command.

Home care instructions are also provided and can be edited by the EMS agencies to include local hotline numbers or specific follow-up arrangements. As mentioned above, the EHSF version was attached to the e-mail sent Thursday evening, which includes those hotline numbers.

Protocol 932 Summary:

- The protocol provides a purpose to identify patients that are safe to remain home.
- Appendix 1 of the protocol provides a checklist to assess if a patient may remain home without contacting medical command.
- Please note, some criteria is different from the EHSF Triage Tool originally released:
 - o Patient age is now less than or equal to 60 years or older than 15 years
 - o Circle the two symptoms (fever, cough, body aches, or sore throat)
 - o New criteria specific for patient is taking an immunosuppressing medication (list is included in protocol)
 - o Moderate/severe asthma is included for criteria stating a patient has a history of chronic lung disease
 - o New criteria for patient has a history of dialysis or liver disease
 - o New criteria for patient has severe obesity or pregnancy > 24 weeks
 - o Heart rate is 50-110 bpm regardless of age
 - o Systolic blood pressure is 100-200 mmHg regardless of age
 - o Room air is included for oxygen saturation of equal to or greater than 95%
 - o Respiratory rate is 12-24 breaths per minute criteria includes “and patient does not complain of respiratory distress or shortness of breath at rest”
 - o Patient can ambulate without difficulty criteria includes “able to ambulate based on baseline disability with caregivers/assistants in home”
- The checklist of criteria now permits the EMS provider to leave the patient at home with home care instructions without the need to contact medical command if ALL checks are in the non-shaded boxes.
 - o If any check is in a shaded box, then the EMS provider needs to call medical command to determine if the patient qualifies for home self-care or needs to be transported to the ED or alternate destination.

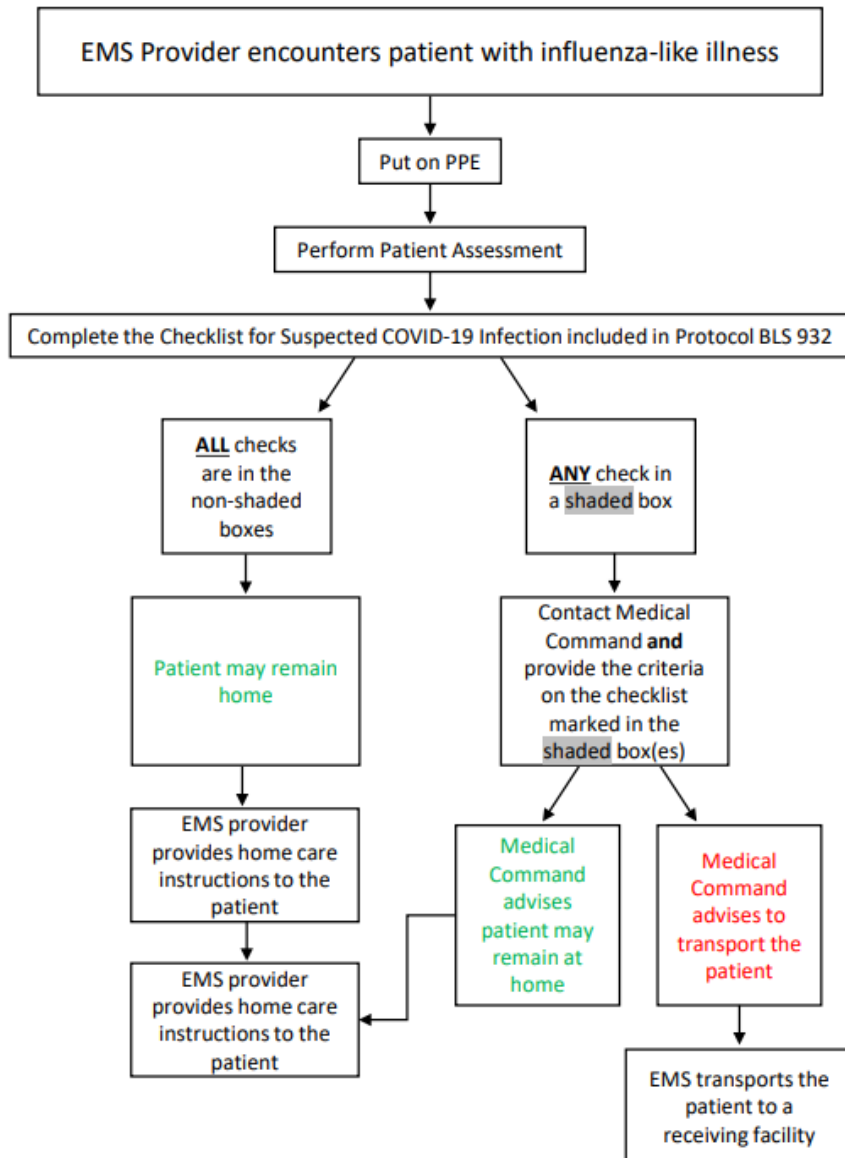
Additional information can be found at: <https://www.ehsf.org/resource/temporary-bls-protocol-932-temporary-statewide-bls-non-transport-patients-suspected-covid?fbclid=IwAR0nFTBiuuBIF5hX5UE-tDrJ1o1omCyThF5BcTWHvKtrhyqJYKSWeck7eM>

Additionally, the EHSF provided a workflow to aid EMS providers in the protocol. It is inserted in the next page of this document.



Protocol 932 Non-Transport of Patients with Suspected COVID-19

04/09/2020



Additional Considerations:

If at any time the patient requests going to the hospital, then EMS should transport based on the patient's request.

The medical command physician can advise any patient to be transported to the hospital regardless of criteria on the Checklist for Suspected COVID-19 Infection.



Thermometer Update

The EHSF is still awaiting the shipment of the infrared thermometers for transporting units. Once the EHSF receives the shipment, Matt Kratz will contact the EMS agencies with the distribution plan.

ESO PCR Guide

Seattle and King County in Washington developed an ESO documentation guide for COVID-19. The guide can be viewed at: <https://www.emsonline.net/assets/2020-Announcements/3-16-20-ESO-EHR-DocumentationGuide-KCEMS.pdf>.

Regional EMS Agency Conference Call Schedule

County	Weekday	Time	Call In Information
Adams	Thursday	1400	571-317-3122 Access Code: 888-434-445
Cumberland	Wednesday	1400	571-317-3122 Access Code: 888-434-445
Dauphin	Wednesday	0900	571-317-3122 Access Code: 888-434-445
Franklin	Thursday	1400	571-317-3122 Access Code: 888-434-445
Lancaster	Friday	1000	Provided through Lancaster County EMS Council
Lebanon	Wednesday	0900	571-317-3122 Access Code: 888-434-445
Perry	Wednesday	1400	571-317-3122 Access Code: 888-434-445
York	Thursday	0900	571-317-3122 Access Code: 888-434-445

If you are unable to attend your specific counties call, you are welcome to join another county's call. However, local information provided by the EMA, PSAP, and hospitals may be missed.

EHSF Activities to Date

- Conference Calls:
 - o Medical Command Facility Directors
 - o County Council Presidents
 - o SCTF
 - o EMS County Council Meetings
 - o Regional 9-1-1 Centers (PSAPs)
 - o Dr. Alvin Wang Regional Medical Director, Montgomery County EMS Council
 - o EMS Agencies
- Finalized Regional COOP Plan Revisions
 - o Prepares the region to request exceptions and make provisions if workforce or resources reach critical levels
 - o Sharing plan with necessary stakeholders
 - o Developing documents to request exceptions if needed



- Generated Best Practice Documents for the following:
 - o EMS Operations and General Information
 - o QRS Response Guidance
 - o Fire Services on EMS Incidents
 - o Screening Providers
 - o No Work / Return to Work Eligibility
 - o PPE is Key
- Monitor staffing levels of EMS agencies and PSAPs
- Sent treatment consideration for ALS Protocol change to Bureau of EMS
 - o Currently under consideration
- Developed tool to assist with no transport/treat at home with self-care for influenza-like illness patients
- Developed reporting tool for minimum staffing exceptions

Communication Pathway

We encourage EMS agency leadership to communicate with the respective County Council President. We will be sharing information to them to share with the EMS agencies. We will also be communicating with them frequently to evaluate the status and needs of each county.

County	County Council President
Adams	Eric Zaney
Cumberland	Duane Nieves
Dauphin	Jason Campbell
Franklin	Doug Bitner
Lancaster	Darrell Fisher
Lebanon	Steve Mrozowski
Perry	Wes Smith
York	Mark Moody

Helpful Information:

You can learn more about the coronavirus on the CDC's website at:

<https://www.cdc.gov/coronavirus/2019-ncov/index.html>

You can reference documents shared by the EHSF at:

<https://www.ehsf.org/index.php/resource/coronavirus-update>